

Draper FlexShade 2

Intermediate-sized motorised shades with your choice of hardware styles and colours.

TOTAL SOLAR SHADING SOLUTIONS

TURNKEY PROJECTS FOR THE CONTRACT MARKET

COMPLEX PROJECTS MADE EASY

0207 697 1188

Draper FlexShade 2

Intermediate-sized motorised shades with your choice of hardware styles and colours.



Features and Options:

- FlexShade 2 is an intermediate sized shade in between Motorised FlexShade and Colossal FlexShade.
- Available in sizes 1219mm to 4877mm wide and up to 7315mm high, depending on fabric.
- Spring loaded idle end for easy installation.
- Interchangeable ceiling/wall mounting brackets are standard.
- Curved or squared fascia and headbox are available in five colours: clear anodized (standard), white, ivory, black and bronze.
- Wall switch included with each shade, or choose one of our versatile control options.
- Available with optional quiet motors, or motors with built-in radio frequency control.
- Pocket Headbox available with removable bottom closure panel.
- Standard or reverse roll available.

Warranty:

25 year limited warranty against defects on hardware.

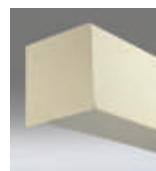
Photo No. 1 & 2: FlexShade 2 and Phifer SheerWeave® 2000 fabric with custom printed graphics at Cultural Center for the Arts, Canton, OH. Dealer: MAK Associates of Ohio, Akron, OH. Architect: Robert Maschke Architects, Cleveland, OH. Photography © Jason Meyer, Feinknopf Photography, Columbus, OH.

Photo No. 3: Motorised FlexShades at Indiana University-Purdue University Indianapolis (IUPUI), Indianapolis, IN. Credits: Photo courtesy of Draper, Inc.; Photographer: Tony Frederick, Muncie, IN.

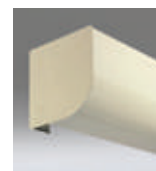
Photo No. 4: Motorised and Manual FlexShades at 7 World Trade Center in New York City. Credits: Photo courtesy of Draper, Inc.; Photographer: Bruce Katz, New York, NY.

Technical Specification:

- 1. Roller Tube** - 100mm diameter steel tube.
- 2. Motor** - tubular gearmotor positioned on the right side as standard, left side optional.
- 3. Mounting Brackets** - steel, suitable for wall or ceiling fixing.
- 4. Roller Idle Assembly** - zinc-plated steel shaft supported by roller bearings in an aluminium housing.
- 5. Endcaps** - complete with adaptor roller bracket, compatible with fascia and headbox, available in clear anodized (standard) or black, white, ivory or bronze powder-coat finish.
- 6. Fascia** - 163mm x 163mm curved or square cover of extruded aluminium, available in clear anodized (standard) or black, white, ivory or bronze powder-coat finish.
- 7. Headbox** - 168mm x 168mm curved or square fascia and L-shaped back/top cover of extruded aluminium, available in clear anodized (standard) or black, white, ivory or bronze powder-coat finish.
- 8. Pocket Headbox** - extruded aluminium with removable bottom closure panel for easy access to roller and drive unit. Aluminium endplates with integrated steel brackets secured to headbox.
- 9. Bottom Hem Pocket** - 54mm heat sealed bottom hem pocket with 3.2mm x 25.4mm aluminium slat. Pocket ends are heat sealed so slat bar cannot be easily removed.
- 10. Shade Fabric** - BAB Projects uses fabrics from leading textile mills. Unmatched style and colour choices. We also offer PVC-free and recyclable fabrics. Fire retardancy and antimicrobial documentation and testing reports are available.



Squared fascia

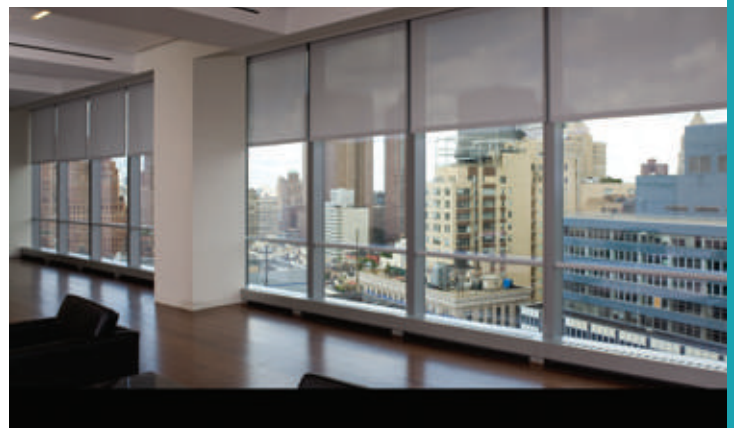
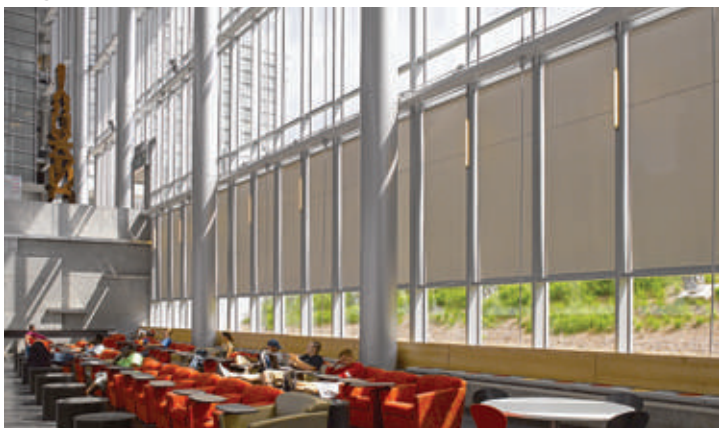
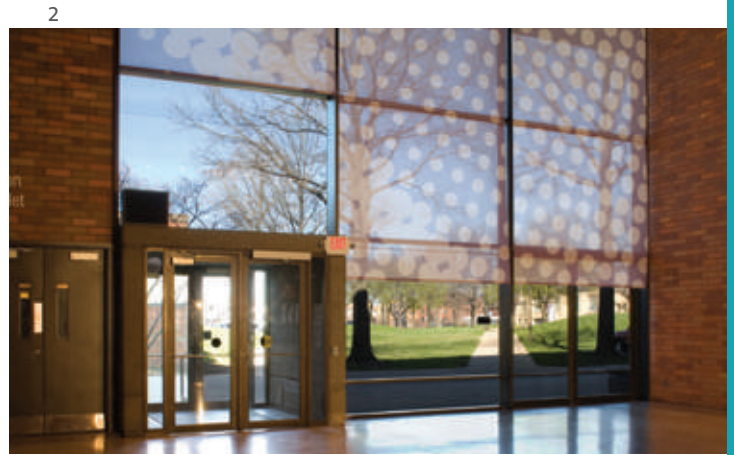
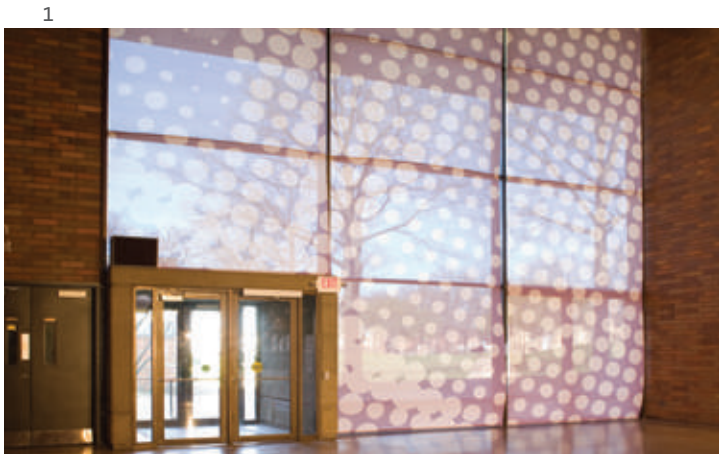
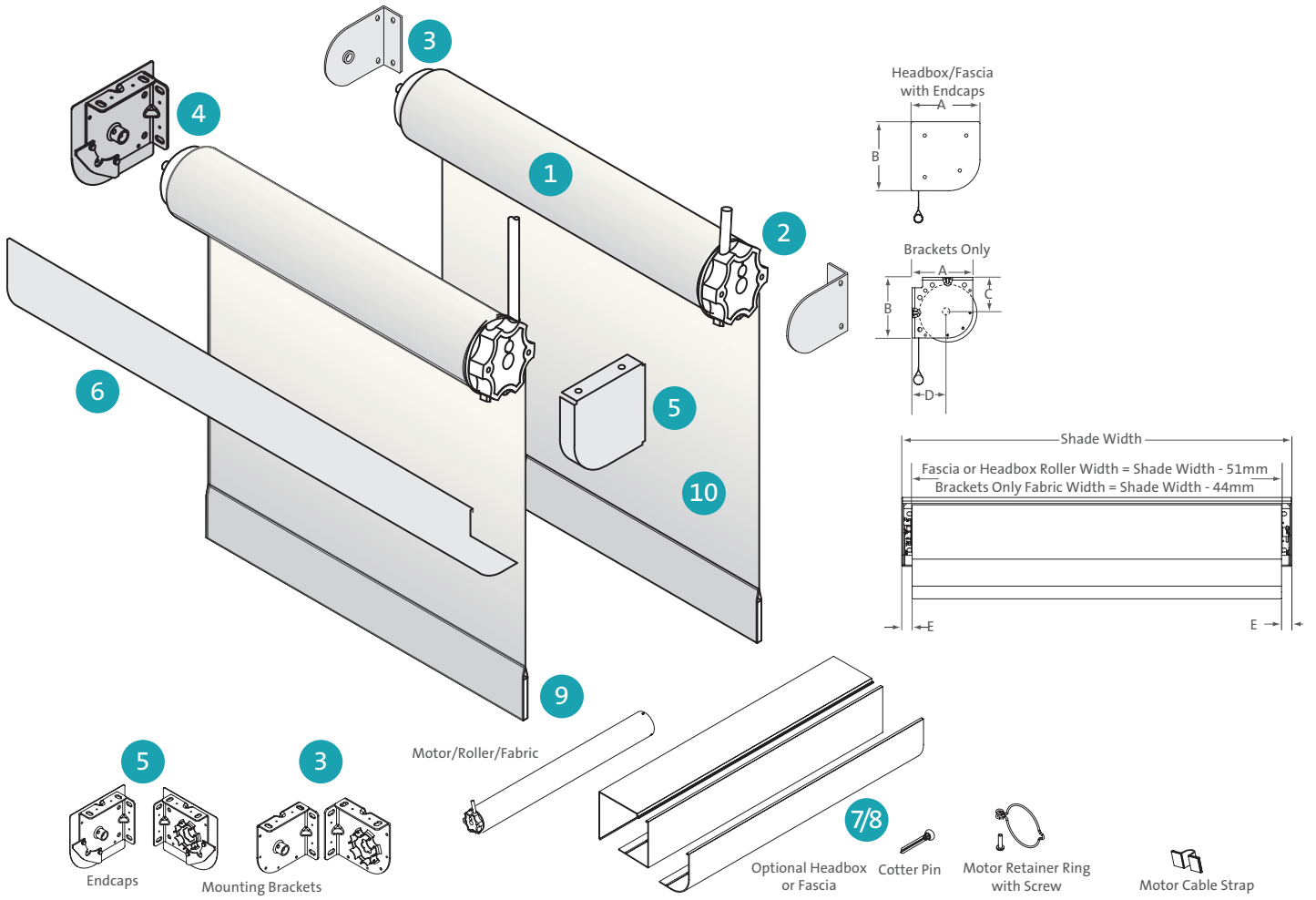


Curved fascia

	Headbox with Endcaps	Fascia with Endcaps	Brackets Only
A	168mm	165mm	138mm
B	168mm	165mm	138mm
C	N/A	N/A	83mm
D	N/A	N/A	83mm
E	25mm	25mm	24mm

Draper FlexShade 2

Blind Components and Dimensions





Photography © Bruce Katz, New York, NY

Case study:

LOCATION: Seven World Trade Center

DRAPER PRODUCTS USED: Manual and Motorised Window Shades with Phifer SW2700

CERTIFICATION LEVEL: Gold

Seven World Trade Center is the first building to be rebuilt at the 9/11 site in New York City. It was also the 1st to receive LEED Gold Certification. Seven World Trade Center has Draper manual and motorised window shades. 7 World Trade Center was designed by David M. Childs. The building has a daylight dimming system in the ceilings that adjusts to the amount of available sunlight. The cost of greening this World Trade Center project added less than 5 percent to its budget.

ABOUT DRAPER: Draper offers lines of window shades for the commercial, educational, and residential markets, and is one of the country's largest manufacturers of window shades. Draper utilises a state-of-the-art 400,000 square foot manufacturing facility. Draper offers unmatched customer service and support and has continued to expand and grow its product lines through the recent recession and slow economy. Draper's in-house engineering department designs our own product components, including clutches, roller tubes, and window shade hardware.

RESPONSIBILITY TO OUR ENVIRONMENT: Draper is looking forward to the needs of the future by establishing itself as a market leader in "Green" environmentally-friendly products and operations.

GREEN PRODUCTS: Draper products can improve a building's energy efficiency. Window shades reflect light and heat from the sun, reducing the amount of energy required to cool the building. Motorised window shades can automatically adjust to compensate for the changing shade requirements throughout the day. Shades support healthy day-lighting while reducing or eliminating uncomfortable glare for workers.

Knowledge | Passion | Experience

BAB PROJECTS

1-3 North Road London N7 9HA

Email: info@babprojects.com

BAB Projects is the specialist specification division of Bright A Blind

BRIGHT A BLIND 
CLEANING • MAINTENANCE • REPAIRS • REPLACEMENTS

0207 697 1188

www.babprojects.com

“ Draper has appointed BAB Projects as its sales and stockist partner for our range of FlexShade products to the UK commercial specification and construction sectors. *Brian Cassley, European Sales Manager - Draper Inc.* ”